



Tempsford Court, Harrow

£375,000 Leasehold

Located within a short walk of Harrow' town centre is this good size ground floor two bedroom purpose built flat that comes with a long lease of approximately 963 years. To be sold with no upper chain and also benefiting from an allocated parking space the property provides spacious accommodation in a well kept and desirable development.

EPC Rating: F

- Ground Floor Flat • Two Double Bedrooms • Spacious Rooms • Town Centre Location • Allocated Parking Space • No Upper Chain • Long Lease of 963 Years



Tempsford Court, Harrow

£375,000 Leasehold

FURTHER DETAILS

The accommodation comprises of an entrance hall, lounge, separate kitchen, two double bedrooms and a bathroom. Outside there are communal gardens and the flat benefits from an allocated parking space.

LEASE DETAILS

The lease is 999 years from 25th December 1985 with a ground rent of £1 per annum. The quarterly service charge, including management fees, for the period 25th December 2020 to 24th March 2021 is £345.00.

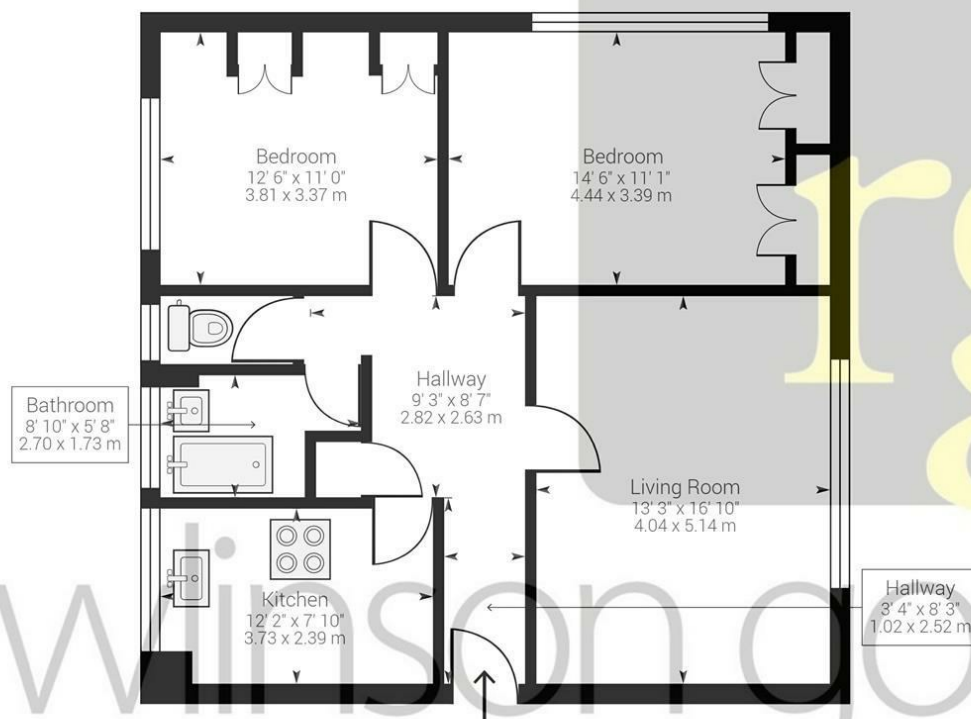
LOCATION

Tempsford Court is located on Sheepcote Road in Harrow which is a short walk from Harrow on the Hill Metropolitan and Chiltern Line train station. Close by is Harrow High School and also within walking distance is Northwick Park Hospital and several supermarkets including Tesco. The excellent shopping and leisure facilities within the town centre are all easily accessible.

CONTACT RAWLINSON GOLD

If you would like to arrange a viewing or discuss any aspect of this property we can be contacted by telephone on 020 8861 2020 or by email on harrow@rawlinsongold.co.uk.





Approximate net internal area: 816.72 ft² / 75.88 m²

While every attempt has been made to ensure accuracy, all measurements are approximate, not to scale. This floor plan is for illustrative purpose only and should be used as such by any prospective tenant or purchaser.

Powered by Giraffe360